

Addicur M

Cementitious Waterproofing Compound

Description:

- **ADDICUR M** is cementitious waterproofing compound, modified with specially formulated synthetic resins and quartz fillers supplied in powder form.
- Penetrates the concrete surface through moisture absorption and reacts with the free lime forming a hard crystalline material, blocking the pores from water penetration and becoming an integral part of the structure.
- Complies with Egyptian code of practice for damp and water proofing.
- Complies impermeability test (DIN 1048).
- Complies colour fastness (ESS 819).
- Complies the requirements of National Organization for Potable Water.

Fields of Use:

- Underground and elevated water tanks, swimming pools, water and sewage units, dams and bridges, foundations and basement, underground structures, damp and drying rooms, oil units etc.

Advantages:

- **ADDICUR M** forms a tough, permanent waterproof layer as an integral part of the structure.
- Does not affect or harm drinking water.
- Is used for the waterproofing of concrete tanks and structures below ground water level.
- In some applications does not need the traditional protection like plastering or screeds.
- Is highly resistant to aggressive chemicals and salts in soil.
- It is water-proofed against direct & negative high water pressure.
- Adheres firmly on smooth and rough surfaces.
- Permanent protection for concrete elements from rusting of steel reinforcements.

Technical Data :(at 25° C)

colour	grey
Density (Powder)	1.66 ± 0.02 kg/l
(Dry mortar)	(2.0 ± 0.2) kg/l
Mixing ratio by wt. (addicur M : water)	5 : 1
Water permeability (7 bar) DIN 1048	Nil (at 3mm thickness)
Compressive strength (7 day) ASTM C 109	200 kg/ cm ²
(28 day) ASTM C 109	240 kg/ cm ²
Tensile adhesion strength (to concrete) EN 1348	8kg/ cm ²
Rate of use (per coat)	1.25 - 1.5 kg/ m ²

Directions for Use:

- Mix **ADDICUR M** powder only with water at ratio 5 : 1 by weight or 3 : 1 by volume, to obtain the desired consistency (thick slurry).
- Saturate dry surfaces with clean water just prior to applying Addicur slurry directly onto concrete surfaces in two or more coats, depending on water pressure.
- To improve Bond, elasticity for special applications add 4% by weight of Addicur M with Addibond or Addibond 65.
- Clean tools by water.

Safety Precautions:

- Wear gloves, overalls and goggles during handling application.
- In case of contact, rinse off thoroughly with water.
- Wash hands with soap and water after use.

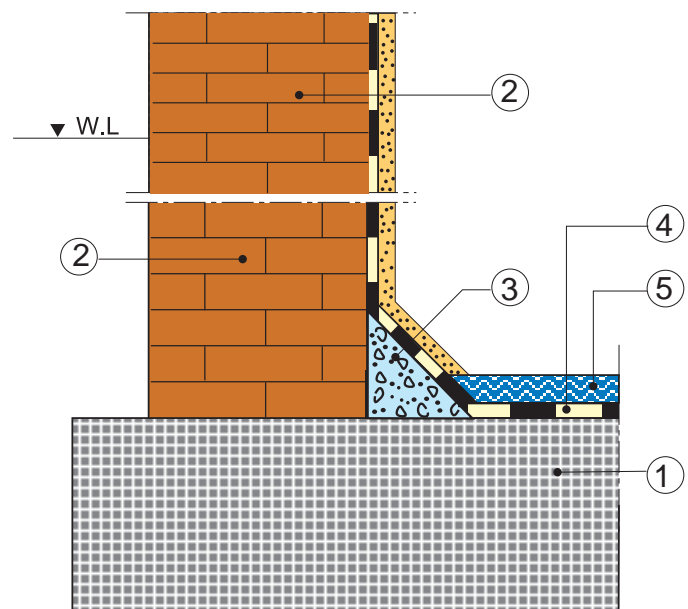
Storage:

- 12 months under dry and suitable storage conditions.

Packages:

- 5 kg, 25 kg and 50 kg.

- 1- Reinforced concrete
- 2- Brick wall
- 3- Angle fillet 50 x 50 mm
- 4- ADDICUR M
- 5- Protective layer



ADDICUR M inside waterproofing
against negative water pressure